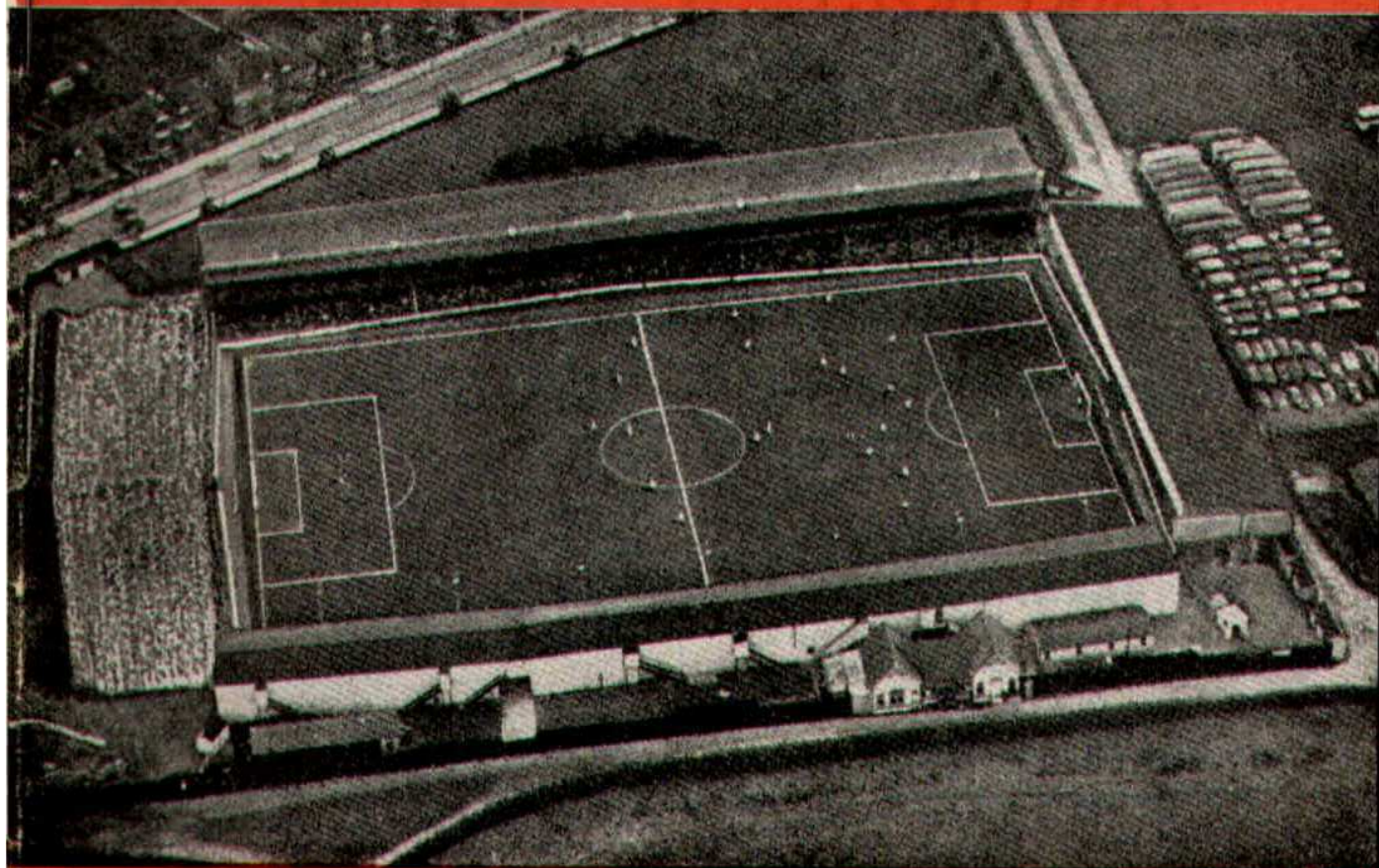




SWINDON TOWN FOOTBALL CLUB



SATURDAY, JANUARY 20th, 1962

DIVISION III

SWINDON TN. v. WATFORD

Kick-off 3 p.m.

Official Programme **4d.**

**SOUTHERN LAUNDRY
CO. LTD.**

Launderers and Dry Cleaners



TELEPHONE 4161

STATION RD., SWINDON

GO MODERN — GO ELECTRIC
for

TELEVISION, RADIO AND
DOMESTIC APPLIANCES

D. ROBSON

22 HAVELOCK STREET

6602

Swindon

6602

Make your Goal the

EAGLE HOTEL

(Prop.: Tom Hamilton)

WORTHINGTON :: GUINNESS

DEVENISH BEERS :: BASS

REGENT ST., SWINDON

LITTLE & CO. LTD.

The Name Linked with Service
and Value

*The Popular Ladies' and Men's
Complete Outfitters*



31-32 FLEET ST., SWINDON

Telephone 22831

NEXT MATCH . . .

FOOTBALL COMBINATION

SWINDON TN. v. PORTSMOUTH

TUESDAY NEXT, JANUARY 23rd

Kick-off 7.30 p.m.

Dr. BARNADO'S HOMES

Take care of 7,500 needy children and
still depend on public support

Send your donation to—

**Barnardo House, Stepney
Causeway, London, E.1.**

Donated by: Mrs. S. Mutch, 60
Cricklade Road, Swindon

LEESE, ING & Co. Ltd.

Incorporating BARKER & CO.

*Mineral Water and
Squash Manufacturers*



LANDSOWN RD., SWINDON

Telephone 22744/22320

HULFORD MOTORS Ltd.

SELF DRIVE HIRE

Fleet of 1961 Fords
Populars - Anglias - Consuls

SHRIVENHAM ROAD

(200 yards from Football Ground)

Phone 4934

LARGE CAR PARK AVAILABLE

For Quality
FLOWERS, FRUIT & VEGETABLES
Also FROZEN FOODS

**CLARKE'S
of Old Swindon**

Proprietors: A. G. G. & J. A. W. HUNT

64 DEVIZES ROAD - SWINDON

'Phone: 22337

ORDERS DELIVERED

SWINDON TOWN FOOTBALL COMPANY LIMITED

Registered Office: COUNTY GROUND, SWINDON

—♦—
Directors:

Mr. W. J. CASTLE (Chairman)

Mr. H. E. LANE (Vice-Chairman)

Mr. B. T. HAMILTON (Hon. Treasurer)

Messrs. C. CHANDLER, J.P., J. DAVIES,

R. FRICKER, C. J. GREEN, F. PLYER, H. WILLIAMS and K. H. WILMER

Manager: B. J. HEAD.

Secretary: R. A. MORSE

VOL. 12

SATURDAY, JANUARY 20th, 1962

No. 18

Club Notes

As this is the first home game for a month, we trust readers will bear with us in a little recapitulation of past events. 23rd December, 1961, and what a grand Christmas present. A greatly improved display and the best win of the season. After the draw at Portsmouth, many hoped for a win, but few expected such an impressive victory, against one of the outstanding teams in the league.

In the last programme we mentioned what we thought about the validity of the second goal scored by Portsmouth. To be quite honest, or to coin a phrase, "Let's have it right!" Many spectators thought the scorer of the fifth goal in an offside position when he received the ball.

Nevertheless, do not let us detract from a grand performance, and how the crowd enjoyed it all. While not wishing to overdo things, the players would have loved to comply with the spectators' request! "We want six!"

A bright little party set off from the County Ground at 3 p.m. on Christmas Day to go north to play at Halifax on Boxing Day. The evening was spent very quietly at Sheffield and the next day we gaily set off for Halifax. On arrival, we were informed the referee had postponed the game; due to the hard state of the ground.

Greatly disappointed, there was only one thing to do: turn back, and head for home. As we progressed southward the state of the roads became treacherous and the bus driver was forced to slacken speed. Unfortunately, not a café open, even for a cup of tea; so we pressed on slowly for Swindon. Eventually a cheerful little group arrived at the County Ground at 9.30 p.m. Not a very merry Christmas for the team.

For the following two weeks there followed frost, snow, and finally "flu". It was a relief when we could at last play a game at Bournemouth, after three weeks "lay off". Again

THE WALCOT CHEMIST

WIDE RANGE OF COSMETICS, PERFUMES,
BABY NEEDS AND PHOTOGRAPHIC GOODS

10 SUSSEX SQUARE - WALCOT
TEL. 6680

M. J. REYNOLDS

Grocer

152/154 CRICKLADE ROAD
5479 SWINDON 5479

COOKED HAM OUR SPECIALITY

WATSON'S CENTRAL NEWSAGENCY LTD.

Swindon's Leading Wholesaler

1 WELLINGTON STREET, SWINDON
Tel. 22049

L. WOLLEN

OFF LICENCE

WINES & SPIRITS

Arkell's Ales and Stout

373 Cricklade Rd., Swindon
Deliveries Daily Phone 3508

CLUB NOTES—continued

we took a point from a team at the top of the league. Although the score was 0—0, Swindon deserved a point, and that could easily have been two, had a header by Atkins been just an inch lower.

The most serious part of all is the fact, that for a month the club has received no income from gate money.

With the return to league foot-

ball, we trust the fortunes will improve both financially, and on the playing field.

Watford occupy the eleventh position in Division 3, and are a strong side. Our last three have been against teams high in the table, Portsmouth, Crystal Palace and Bournemouth. Can we continue the good work? Good luck lads, and if it is not too late—A Happy New Year to everyone.

FOR ALL YOUR ANGLING NEEDS
CONSULT

FRANK WOODWARD

Swindon's Fishing Tackle Specialist

25 HAVELOCK ST., SWINDON
PHONE 3879

WE ARE SPECIALISTS IN —
OUTSIDE CATERING AND LICENSED BARS
FOR WEDDINGS, FETES, SPORTS DAYS, etc.

THE MASONS ARMS HOTEL

31 HIGH STREET - SWINDON 3522

H. E. LANE

(REGENT STREET) LTD.

The Pork Sausage Specialists

117 Victoria Road, Swindon
Telephone: 22336

COMLEY'S

Modern Music Centre

26 HAVELOCK ST., SWINDON

RECORDS - MUSIC - INSTRUMENTS

Top Twenty "Pops" always in stock
and wide selection of Jazz and Classics

PERSONAL SUPERVISION

Phone 3874

FIXTURES AND RESULTS TO DATE

DIVISION III

1961

Aug. 19	Portsmouth	H	1-3
21	Coventry City	A	1-2
26	Crystal Palace	A	1-3
29	Coventry City	H	3-3
Sept. 2	Bournemouth	H	1-1
4	Queen's Park R.	A	1-6
9	Watford	A	0-2
16	Hull City	H	1-1
19	Barnsley	H	1-1
23	Northampton T.	A	2-1
27	Barnsley	A	2-6
30	Lincoln City	H	4-0
Oct. 3	Grimsby Town	H	0-0
7	Brentford	A	0-1
10	Grimsby Town	A	1-0
13	Reading	H	4-1
17	Queen's Park R.	H	0-0
21	Bristol City	A	3-5
28	Bradford	H	3-2
Nov. 4	(1) Kettering T.	H	2-2
8	Kettering T.	A	0-3
11	Shrewsbury Tn.	H	1-2
18	Peterborough U.	A	2-3
25	(2)		
Dec. 2	Newport County	A	2-2
9	Southend U.	H	0-0
16	Portsmouth	A	2-2
23	Crystal Palace	H	5-0
26	Halifax Town	A	P
30	Halifax Town	H	P

1962

Jan. 6	(3) Notts County	A	P
13	Bournemouth	A	0-0
20	Watford	H	
27	(4) Port Vale	H	
Feb. 3	Hull City	A	
10	Northampton T.	H	
17	(5) Lincoln City	A	
23	Brentford	H	
Mar. 2	Reading	A	
10	(6) Bristol City	H	
17	Bradford	A	
23	Notts County	H	
31	(S.F.) Shrewsbury	A	
Apr. 7	Peterborough U.	H	
14	Port Vale	A	
20	Torquay Utd.	H	
21	Newport County	H	
23	Torquay Utd.	A	
28	Southend Utd.	A	
May 5	(Final)		

FOOTBALL COMBINATION

1961

Aug. 22	Leyton Orient	H	0-0
Sept. 6	Southend Utd.	A	1-3
13	Portsmouth	A	1-7
20	Bournemouth	A	0-3
26	Birmingham	H	1-1
Oct. 4	Aldershot	A	1-2
10	Watford	H	1-3
Nov. 1	Millwall	A	0-1
7	Fulham	H	1-4
14	Southampton	H	2-0
22	Coventry City	A	2-1
29	Reading	A	1-3
Dec. 5	Brighton	H	4-2
12	Brentford	A	3-1
19	Charlton	H	P

1962

Jan. 3	Chelsea	A	P
9	Chelsea	H	0-0
17	Leyton Orient	A	1-2
23	Portsmouth	H	
31	Birmingham City	A	
Feb. 6	Bournemouth	H	
13	Watford	A	
20	Aldershot	H	
26	Queen's Park R.	A	
Mar. 6	Millwall	H	
14	Fulham	A	
20	Southend Utd.	H	
28	Southampton	A	
Apr. 3	Coventry City	H	
10	Reading	H	
17	Brighton	A	
23	Brentford	H	
May 2	Charlton	A	
To be arranged	Q.P.R.	H	

Our Visitors

WATFORD F.C.

The existence of Watford Football Club dates back to the amalgamation of two local clubs in 1891. Little is known of those early days, but it is on record that one of those clubs provided the goalkeeper for the first English International match in 1872. Formerly member of the Southern League, Watford joined the Football League in 1920 and remained in the Southern Section of Division Three until the change to third and fourth divisions, when they were unfortunate to go into the latter. Promotion was gained to the third division in 1959/60 and last season they were generally well up with the leaders for the most part of the season and finally finished in fourth place. They are managed by Mr. Ron Burgess who will be remembered for his great performances as a player for Spurs and Wales.

Below are some pen pictures of their players:—

Jimmy Linton (Goalkeeper)

Joined the club in 1959 from Notts County. Born in Glasgow. Is now a part-time player and is a joiner by trade.

Dave Underwood (Goalkeeper)

Dave is also a part-time player, running a haulage business during the week. This is his third spell with Watford.

Bobby Bell (Back)

Joined Watford in 1957 from Ayr United and has been a regular member of the first team since that date.

Ken Nicholas (Back)

Came to Watford from Highbury in 1959. Born at Northampton and gained honours in Schoolboy and Youth Football.

Colin Meldrum (Back)

Joined the Vicarage Road staff in November, 1960, and soon gained promotion to the senior side. An operation for appendicitis cost him his place, but he will be knocking at the door again.

Andy Porter (Half Back)

Signed from Darvel Juniors in 1959 as an inside forward, Andy has improved tremendously since reverting to half back.

Vince McNeice (Half Back)

Rated as one of the best centre halves in the Division. This will be his fifth season with the Club. Spent the summer playing for Montreal Concordia in an International Tournament.

Sammy Chung (Half Back)

Now in his fifth season at Vicarage Road. During the summer he underwent an operation for cartilage trouble.

Peter Barnes (Half Back)

One of the products of the Junior side, Peter is a part-time player being employed in the printing industry during the week.

John Ryden (Half Back)

A close season signing from Spurs. John was formerly with Alloa and Accrington Stanley.

Tony Gregory (Half Back)

Signed from Luton Town as a winger, but gained a first team place as a left half towards the end of last season.

Mickey Benning (Forward)

Mickey is a part-time player working in the printing industry. Has attracted the attention of several leading clubs.

Continued on page 7

C. Dunn & Son

BUILDERS & DECORATORS

Alterations, Renovations, Conversions
Plumbers and Sanitary Engineers

503 CRICKLADE ROAD Tel. 22522

FOR PAINTS OF GOOD QUALITY
H. S. HODGES & SONS
(SWINDON) LTD.

CRICKLADE ROAD - SWINDON
PHONE 22422

Dulux, Brolac, Friary, Valspar, Wallcharm, etc.

NOTTON'S CAFE

COUNTY ROAD

200 yards from Ground

RIGHT ON THE BALL

Harold Fleming

24 REGENT CIRCUS - SWINDON

Phone 22813



FOR ALL SPORTS EQUIPMENT

Also, Scout, Guide, Cub and Brownie Wear

OUR VISITORS—continued

Tommy Harmer (Forward)

Joined Watford from Spurs last October. A ball artist, Tommy has shown defences how to score some delightful goals.

Peter Walker (Forward)

One of the long serving players with the Club, having joined the staff in 1954. Can fill most forward positions.

Freddie Bunce (Forward)

A former Youth International, Freddie broke the Club goalscoring record for a winger last season with 18 goals.

Alf Stokes (Forward)

Joined the Club last April from Cambridge City after playing for Spurs and Fulham.

Tommy Williams (Forward)

Previously with Colchester United, Tommy came to Watford during the close season.

Ron Crisp (Forward)

Became a professional after leaving the services last January. Previously played for Dulwich Hamlet.

John Fairbrother (Forward)

Scored 40 goals in his first season in the Football Combination. Joined the Club in 1959.

GODDARD & Co.

Wholesale and Retail

WINE - SPIRIT - BEER
AND CIDER MERCHANTS

9 REGENT STREET, SWINDON

Telephone 22415

Also at

4 WINGATE PARADE, SWINDON

We are your **Main Distributors** for
VAUXHALL and **JAGUAR** cars
BEDFORD Vans and Trucks, etc.

Any make of Car or Truck
supplied - Used Vehicles a
specialised part of our
business.

SKURRAY'S
SWINDON

Telephone: 22266

H. HIBBERD LTD.

Plant Hire Contractors

TRACTORS and SCRAPERS
BULLDOZERS
DROTT SHOVELS
DIGGERS
ROAD ROLLERS

40 NEWPORT STREET, SWINDON

Telephone 6125

Swindon Bacon Curing Co. Ltd.

*Specialists in
Bacon, Pork & Cooked Ham*

50 FLEET STREET
SWINDON

Telephone: 22122

WARNES (Swindon) Ltd.

Electrical Contractors
Radio and Television

Contractors to:

SWINDON TOWN FOOTBALL CLUB

51/52 COMMERCIAL RD., SWINDON

'Phone 6346/7

160 COUNTY RD., SWINDON

'Phone 6346/7

9 SWINDON ST., HIGHWORTH

'Phone 379

7 CLIVE PARADE, SWINDON

'Phone 6346/7

DAY RETURN TICKETS

On Weekdays and Sundays (services permitting), available in each direction by any train the same day. From Swindon Junction to:-

	2nd Class
Bath Spa	7/6d.
Bristol (T.M.)	9/0d.
Weston-super-Mare	11/6d.

Other fares available. Ask for pamphlet B7/411, giving full information.

BRITISH RAILWAYS

Western Region

W. B. CARTER

Newsagent, Tobacconist and Confectioner
Large selection of Boxes of Chocolates
always in stock

CORONA, TIZER, DRINKS, etc.

Agents for Wall's Ice Cream

188/190 FERNDAL RD., SWINDON

Telephone: 3089

MILLS & MERI

SWINDON TOWN v. WATFORD

SWINDON TO

RIGHT WING

Colours: RED SHIRTS, W

O'Hara

Wollen (2)

Morgan (4)

Owen (5)

Summerbee (7) Hunt (8) Smith (9)

Referee—

Mr. J. R. Loynton
(Solihull)



Bunce (11) Walker (10) Fairbrother

Gregory (6) McNeice (5)

Nicholas (3)

Underwood

WATFORD

LEFT WING

These teams are subject to

16-17 BRIDGE ST. S

ENGLAND'S QUALITY
SERVICE

Your Car washed in and

THE INSTANT C

6/- ANY MAKE —

Local Station

MARLBOROUGH ROAD
SWINDON

QUEENS ROAD
READING

Make your goal . . .

MILROYS RESTAURANT

Top of the Catering League

COFFEE - LUNCHES - TEAS

Parties catered for.

Regent Street, Swindon. Tel. 5294

ERRICKS LTD.

RD Kick-off 3 p.m.

IDON TOWN

SHIRTS, WHITE SHORTS

LEFT WING

O'Hara

Trollope (3)

en (5)

Chamberlain (6)

Smith (9)

Atkins (10)

Weaver (11)

Linesmen —

Red Flag —

Mr. H. Stevens
(Midsomer Norton)

Yellow Flag —

Mr. D. A. Munday
(Tredegar)

irbrother (9)

Crisp (8)

Brown (7)

Neice (5)

Catleugh (4)

)

Bell (2)

nderwood

ATFORD

subject to alteration

RIGHT WING

T. SWINDON

PHONE
5365

QUALITY CAR WASHING SERVICE

in under 5 minutes by
ANT CAR WASH
E — 4 WASHES £1

al Stations:

ENS ROAD
READING

QUEENS ROAD
BRISTOL

THE PLESSEY COMPANY Ltd.

After years of achievement have great expansion plans for the future.

TECHNICAL STAFF
CLERICAL STAFF
MANUAL WORKERS

are essential for this progress.

Interested persons please apply to the Personnel Department.

INSIST ON

Garrard

EQUIPMENT



For Superb Tape and Record Playing



Fitted by the World's leading manufacturers.

WILSONS (SWINDON) LTD.

BUILDERS OF
MODERN ATTRACTIVE HOUSES
AND BUNGALOWS

All enquiries to Head Office:

90 COMMERCIAL ROAD
SWINDON 6361-3

ONE QUALITY ONLY—THE BEST !
FRESH SUPPLIES DAILY

York Road Fisheries

SWINDON

WET, DRY or FRIED Tel.: 3680

Rent your T.V. - Washing Machines
Spin Dryers - Electrical Installations
from

D. V. HOLLAMBY LTD.

138 High St., Wootton Bassett, Wilts.

Telephone 295

ALL LEADING MAKES IN STOCK

DEMPSTER ENTERPRISES, offer a modern fleet of 4 and 6 seater self-drive hire cars, for your pleasure and convenience. For advance bookings apply:-

Dempster Enterprises

38 VICTORIA ROAD, SWINDON

Tel. 6460

Howard Autos, Swindon's Main Cotton Motor Cycle distributors always have a good selection of guaranteed used cars for you to choose from.

HOWARD AUTOS

134/5 MANCHESTER ROAD

Tel. 6603

and at 3 WELLINGTON STREET, SWINDON

Have you purchased your ticket for the

HALF-TIME

JACKPOT DRAW

TICKETS 6d. each—on sale on the Ground

FOUR PRIZES

Result of Draw on Saturday, 23rd December, 1961

1st Prize—£31-10-0. Ticket No. 4678

2nd Prize—£23-12-6. Ticket No. 9231

3rd Prize—£15-15-0. Ticket No. 11789

4th Prize—£7-17-6. Ticket No. 9809

'BAILEY'S'

2 Cheney Manor Road - Swindon

NEWSAGENT :: TOBACCONIST
CONFECTIONER

Personal Attention and Satisfaction
always assured.

MEET YOUR FRIENDS FOR AN
ENJOYABLE EVENING AT

THE KINGSDOWN INN

(Host A. W. Vann)

FULLY LICENSED - ARKELL'S BEERS
SNACKS, Etc.

Stratton St. Margaret. Tel.: 3283

A. WHEELER & SON

330 CRICKLADE ROAD

PHONE 22095

FOR QUALITY COALS
AND PROMPT SERVICE

Lowest Terms for Self Drive Cars
* * *
Free Deliveries - Glasses loaned free
for your Wines, Spirits and Beers
115 CRICKLADE ROAD
"The Corner Off Licence"
Ring 4711 or call at

Supporters' Club Notes

Owing to the postponement of the match against Halifax Town on 30th December our notes for that date did not appear. Consequently we were deprived of our opportunity to wish all at the County Ground a Happy New Year.

Since then, we have had one of the barest patches we remember in any season, and have not appeared in print, but, if not too late we would offer our good wishes again, in the hope that the weather will be more kind on this occasion.

Four weeks without normal income is a serious matter for any organisation, but we are pleased to have been able to assist in bridging the gap by paying £1,500 to the Directors of the Football Company—£1,000 for their general purposes and £500 further on account of the debt on the Floodlights.

We find that it was not until more publicity was given recently to the Floodlight Fund, that many spectators realised that the Fund was still open, and that the cost of the installation had not been fully paid.

We shall be pleased to receive donations, large or small, at any time for the credit of this Fund.

Having West Country connections, we frequently see newspapers from that district. The name of Mr. Ellis Stuttard, manager of Plymouth Argyle, has appeared prominently and frequently of late. He has had a very quick rise to fame. Several times last season, at Combination matches, when a player was injured, we heard spectators asking who was Swindon's Reserve Team Trainer.

Another former Swindon personality, whose name appears in West Country news is A. McShane, who is in business there, but still plays for Liskeard, the Cornish team.

A few years ago, a West Country goalkeeper, D. Vosper, was given a trial in Swindon Reserve team. After a number of travels, we learn that he has now returned to Tavistock Town, with which Club he was playing when Swindon noticed him.

Lucky programme numbers on 23rd December were: 3—Mr. E. McDougal, 72 Spring Road, Abingdon. 1799—Mr. M. Theobald, 20 Cheddar Road, Swindon.

KEY OF THE BOARD

Half-time scores will be given in two sections: First Section indicated by [1]. Second Section indicated by [2].

FIRST SECTION

A—Birmingham v. Ipswich
B—Blackburn v. Nottingham F.
C—Blackpool v. Wolverhampton W.
D—Bolton v. Cardiff
E—Everton v. Leicester C.
F—Fulham v. Sheffield W.
G—Manchester C. v. Arsenal
H—Sheffield U. v. Chelsea
I—Tottenham H. v. Manchester U.
J—West Brom. A. v. Burnley
K—West Ham v. Aston Villa
L—Bristol R. v. Stoke
M—Derby v. Leyton O.
N—Leeds v. Sunderland
O—Luton T. v. Swansea T.
P—Middlesbrough v. Plymouth
Q—Newcastle v. Huddersfield
R—Norwich v. Rotherham
S—Southampton v. Bury
T—Walsall v. Preston N.E.

SECOND SECTION

A—Halifax v. Bournemouth
B—Lincoln C. v. Northampton
C—Notts C. v. Coventry C.
D—Peterborough v. Bradford
E—Southend v. Brentford
F—Torquay v. Hull City
G—Aldershot v. Stockport
H—Bradford C. v. Oldham
I—Carlisle v. Accrington
J—Crewe v. Exeter C.
K—Doncaster v. Barrow
L—Gillingham v. Chesterfield
M—Mansfield v. Workington
N—Rochdale v. Wrexham

The Rendezvous of all Sportsmen . . .

THE CROWN INN

(Host: Frank Plyer)

Arkell's Best Ales : Fully Licensed
Snacks, etc.

STRATTON ST. MARGARET Tel. 2339

SUPPORT YOUR HOME

CIVIL DEFENCE

Plays a vital part in saving lives

Particulars:

CIVIC OFFICES - SWINDON

WIN OR LOSE !

THE FOOD IN THE

China Restaurant

IS BEST

* * *

107 COMMERCIAL ROAD

SWINDON 6888

Open Daily 12 noon - 11.30 p.m.

For all Chinese and English Dishes

HALF-TIME

JACKPOT DRAW

TODAY'S WINNING NUMBERS WILL BE ANNOUNCED AT
HALF-TIME.

The following will assist you to record the numbers and prizes as
announced.

1st PRIZE	No.	Amount £.....
2nd PRIZE	No.	Amount £.....
3rd PRIZE	No.	Amount £.....
4th PRIZE	No.	Amount £.....

Winning numbers will also be published in "Evening Advertiser"

Tickets printed for the Draw on Saturday, December 30th, will be valid
for today's Jackpot Draw.

COATE GARAGE



REPAIRS
SERVICING
TYRES

★

OVERHAULS
REBORING
WELDING

Props.: E. V. & W. H. Mattick

MARLBOROUGH ROAD, SWINDON

For something a little different, try

DON JONES

HIGH CLASS CONFECTIONER
AND TOBACCONIST

Always a good selection of
SUCHARDS' - TOBLER
TERRY'S

Quality Chocolates and Presentation
Boxes

112 COMMERCIAL ROAD

6012

SWINDON

6012

Typewriters from £10

FULLY GUARANTEED

DOBELL SHEARMAN

& CO. LTD.

26 HIGH ST. & 33 FARINGDON RD.,
SWINDON Telephone 4961

Only 800 yards to your Dream Car—

NEW ALPHA MOTOR Co.
(SWINDON) LTD.

QUEENS DRIVE, SWINDON

Tel. 5062/63

FOR TOP QUALITY USED CARS

Open 7 days per week from 7 a.m. to 10.30 p.m.

Servicing for all makes of cars

DIVISION III

	P.	W.	D.	L.	F.	A.	Pts.
Portsmouth	26	17	6	3	48	24	40
Bournemouth	28	12	12	4	46	28	36
Peterborough Utd.	27	15	4	8	64	55	34
Reading	26	15	3	8	49	40	33
Crystal Palace	27	13	6	8	63	46	32
Queen's Park Rangers	25	12	7	6	63	40	31
Bristol City	27	13	5	9	51	39	31
Northampton Tn.	27	12	6	9	54	33	30
Grimsby Town	27	13	4	10	38	39	30
Port Vale	27	11	7	9	41	33	29
Watford	28	10	9	9	44	47	29
Coventry City	26	10	8	8	38	39	28
Shrewsbury Tn.	27	8	9	10	49	51	25
Southend Utd.	28	8	9	11	37	43	25
Hull City	25	9	6	10	33	30	24
Bradford	25	10	4	11	46	46	24
Notts County	24	9	5	10	44	46	23
SWINDON TOWN	26	6	10	10	41	47	22
Halifax Town	21	7	5	9	32	37	19
Barnsley	24	7	5	12	43	54	19
Lincoln City	25	6	7	12	31	44	19
Brentford	26	7	3	16	26	57	17
Torquay Utd.	27	6	4	17	44	71	16
Newport County	27	3	4	20	29	65	10

Chappell's Funeral Service

(Fun. Dir.: A. A. Winchcombe)

196 COUNTY ROAD
SWINDON

24 hour Service Tel. 6073

Your local "TEAM" for RENAULT
Sales and Service

CORONATION CAR SALES

67/68 VICTORIA ROAD

Telephone 4964

**SEA VIEW HOLIDAY
CAMP**

YOUR HOST — Mr. BENNETT

WYKE REGIS - WEYMOUTH
Dorset

"COAL!"
"COAL!"
"COAL!"

J. WILMER

ST. MARGARET'S ROAD, SWINDON

Telephone 22535

MEET YOUR FRIENDS AT THE

Southbrook Inn

(Hosts: Mr. and Mrs. Jack Scutts)

FULLY LICENSED
CLINCH BEERS, ETC.

SOUTHBROOK STREET, SWINDON
Tel.: 5837

STOP!

LOOK!

NU-HOMES

For all Household Fitments

Paints - Emulsions - Wallpapers
Kitchen Units and Bathroom Suites,
etc.

176a Manchester Road
TELEPHONE 22178

FRIDAY NEXT, JANUARY 26th

SWINDON TN. v. BRISTOL R.

(FRIENDLY)

Kick-off 7.30 p.m.

**BRITANNIA
MOTORS**

Proprietors A. GODWIN

205-206 RODBOURNE ROAD
SWINDON PHONE 5303

- **TYRES**
NEW AND REMOULD
CASH OR EASY PAYMENTS
- **ACCESSORIES**
- **QUICK SERVICE AND REPAIRS**
AT SWINDON'S MOST MODERN
LUBRICATION BAY AND
WORKSHOP

*For High Class
Central Heating, Plumbing
Painting and Decorating
Electrical Installations
and Repairs*

•

NORTH WILTS

Sanitary & Heating
Co. Ltd.

NEWPORT ST., SWINDON

'Phone: 5373/4

Always at your service

L. BIBBY

For all Types, Rags, Iron and Metal,
etc. Spot Cash Paid. Please Telephone
2101 and our van will call.

THE PADDOCK, ERMIN STREET
STRATTON ST. MARGARET

Walcot Greengrocer

G. E. STAMMERS

✱

**1 SUSSEX SQUARE
SWINDON**

SWINDON

22526

CAN ALSO BE YOUR LUCKY NUMBER ! ! !

if you ring

HOLMES & LUCAS

14A REGENT STREET :: SWINDON

for all your

TELEVISION, RADIO AND ELECTRICAL REQUIREMENTS

LUCKY PROGRAMME

Please retain your programme. An announcement will be made at half-time of two numbers and the holders will be given a stand seat at the next Division III game. The persons who purchased the programmes bearing the winning numbers should call at the office after the game and claim their seats.

1584

FRIED FISH AND CHIPS

Always Fresh - Always Hot

WALCOT FISHERIES
Sussex Square

Wet fish and frozen foods all refrigerated display.

Telephone Swindon 22731

6 REGENT CIRCUS (NEAR G.P.O.)

Agents for Wessex School of Motoring
Main Booking Agents for Millers Coaches
Newsagents & Tobacconists & Confectioners
A. J. D. WOODHOUSE & A. SMITH

HATTON'S NEWSAGENCY

For Insurance or Hire Purchase
CARS - CARAVANS - MOTOR CYCLES, etc.
Consult

D. & H. HENTY LTD.

54 COMMERCIAL RD., SWINDON

SWINDON 5258

PANKHURST

The Palace, Gorse Hill,

Swindon

**MOTOR CYCLE - SCOOTER AND
THREE-WHEELER SPECIALISTS**

Open Mon. to Sat. 9 a.m. - 8 p.m. Phone 5466

MORGAN'S

IRONMONGERS

C.A.S.M.S. (Swindon) Ltd.

2 SUSSEX SQUARE, WALCOT, SWINDON
also at 163 ROXBORNE ROAD Tel. 22516

Paraffin services to all areas town and country
Everything for the home
Precision Tools for Engineering Trade.
Tools for all trades

Maylott Studios

For GROUP & SPORT Photographs
OFFICIAL PHOTOGRAPHER TO
SWINDON TOWN FOOTBALL CLUB

31 FARINGDON RD. Tel. 22792